

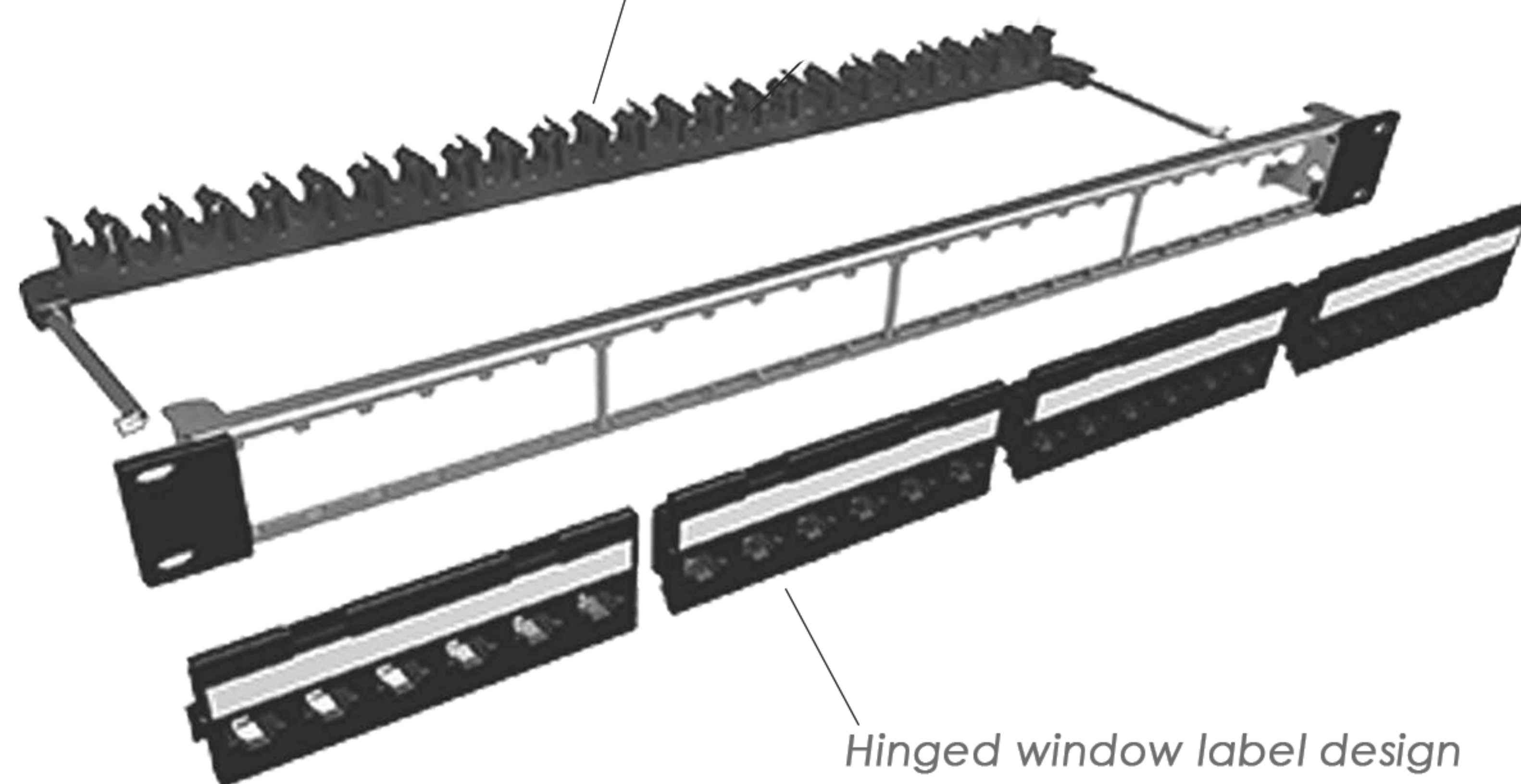
Front Loading Blank Patch Panel



The 24-Port front-loading UTP/FTP patch panel is designed for fast installation and easy front access for keystone jacks and universal keystone style connectors. It's tool-free makes it ideal in limited area while allowing quick module removal and cable access.



Tool-free rear cable management bar included



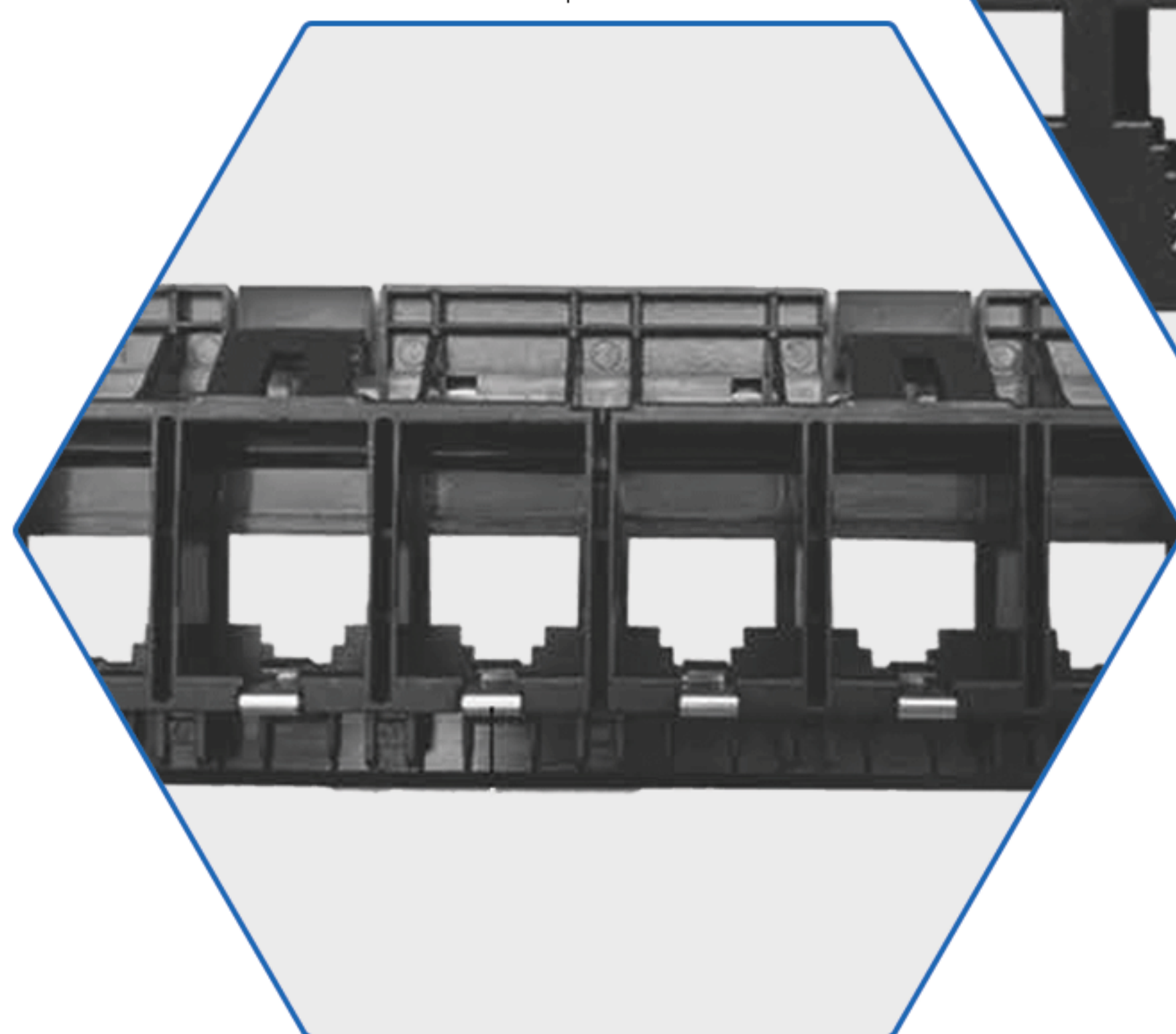
Hinged window label design allows easy access and quick label changes

Part Number: FLBPPUF-1U24

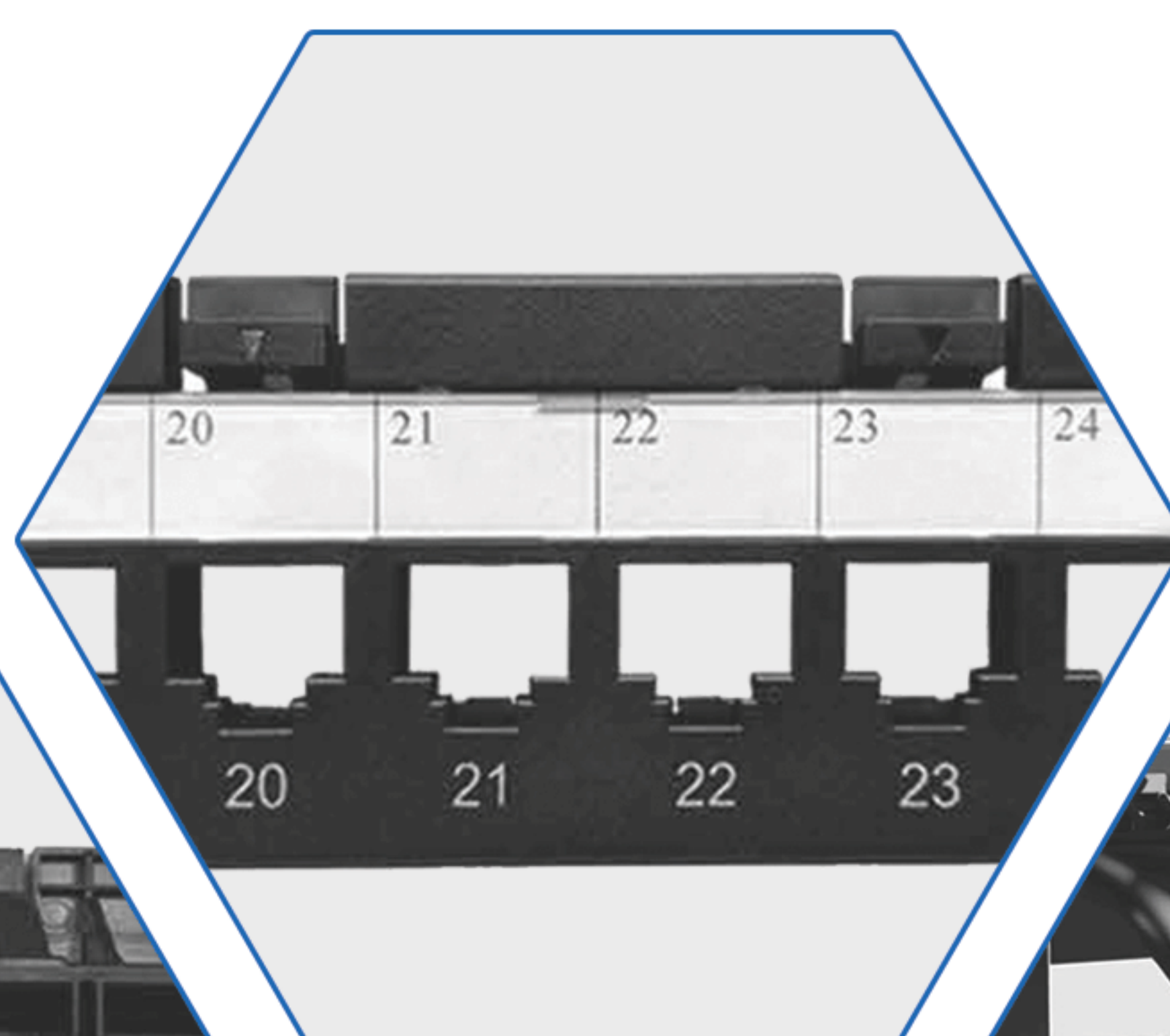
FEATURES

- Uses a 6-port module design
- Front access design for easy module insertion and removal
- Supports front/rear installation ideal for hard to access applications
- Tool-free module insertion and removal from the front of the panel
- Front loading simplifies upgrades and changes in existing networks
- Compatible with universal keystone style connectors (sold separately)
- Easy port Identification with silkscreened port numbers for quick reference
- Mounts on standard 19-inch equipment racks

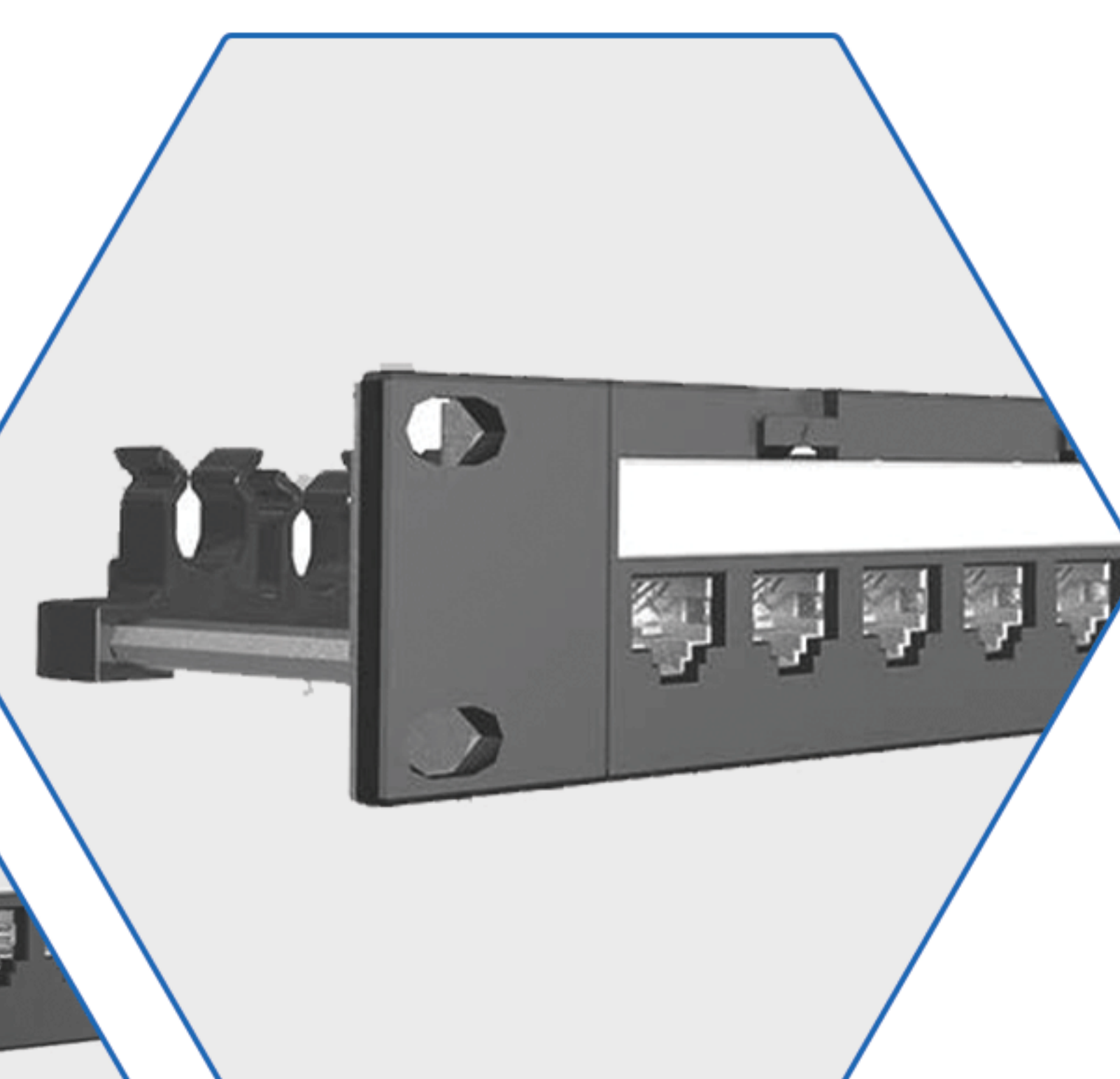
FTP solution uses a grounding clip & wire for secure connection of the FTP jack to the panel, ensuring proper grounding



Inserts & remove with swift installation



Hinged window label design allows easy access and quick label changes



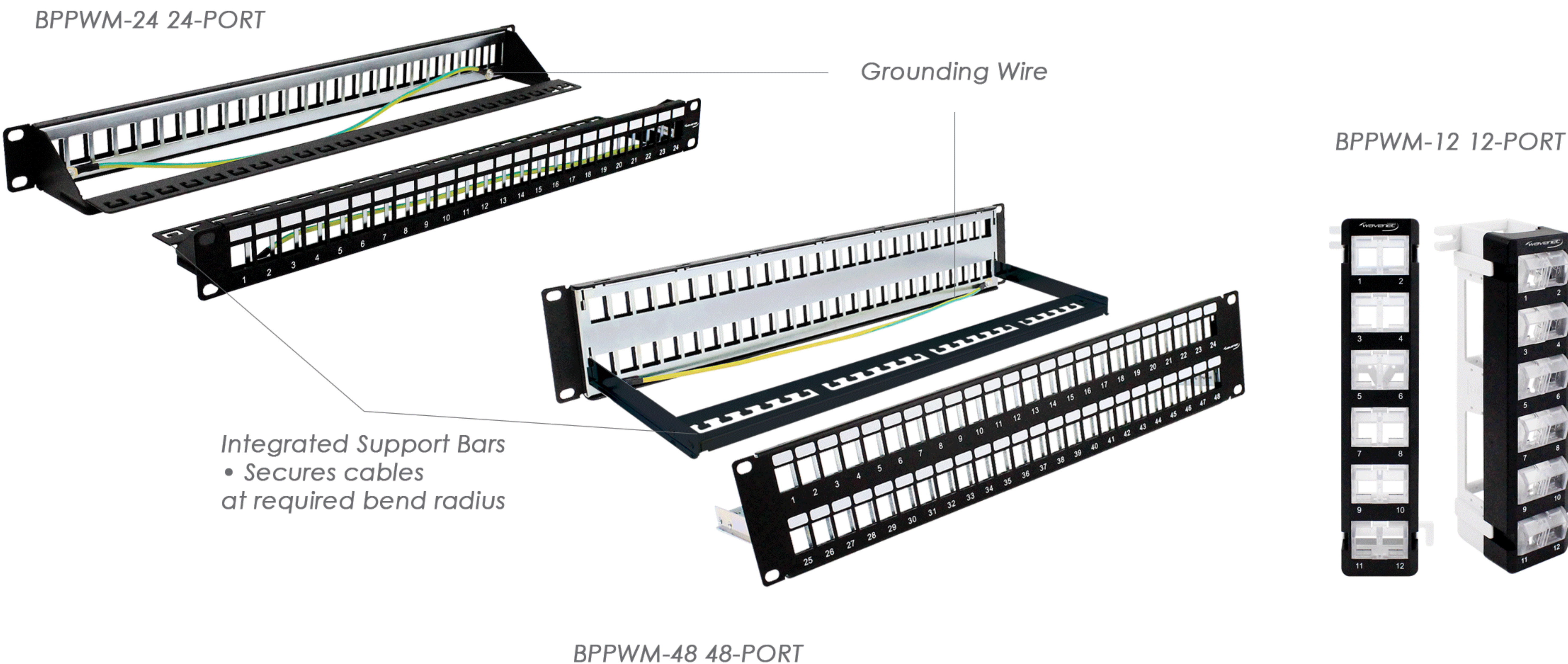
Tool-Free for easy and smooth cable management ideal in areas with limited space available behind the rack



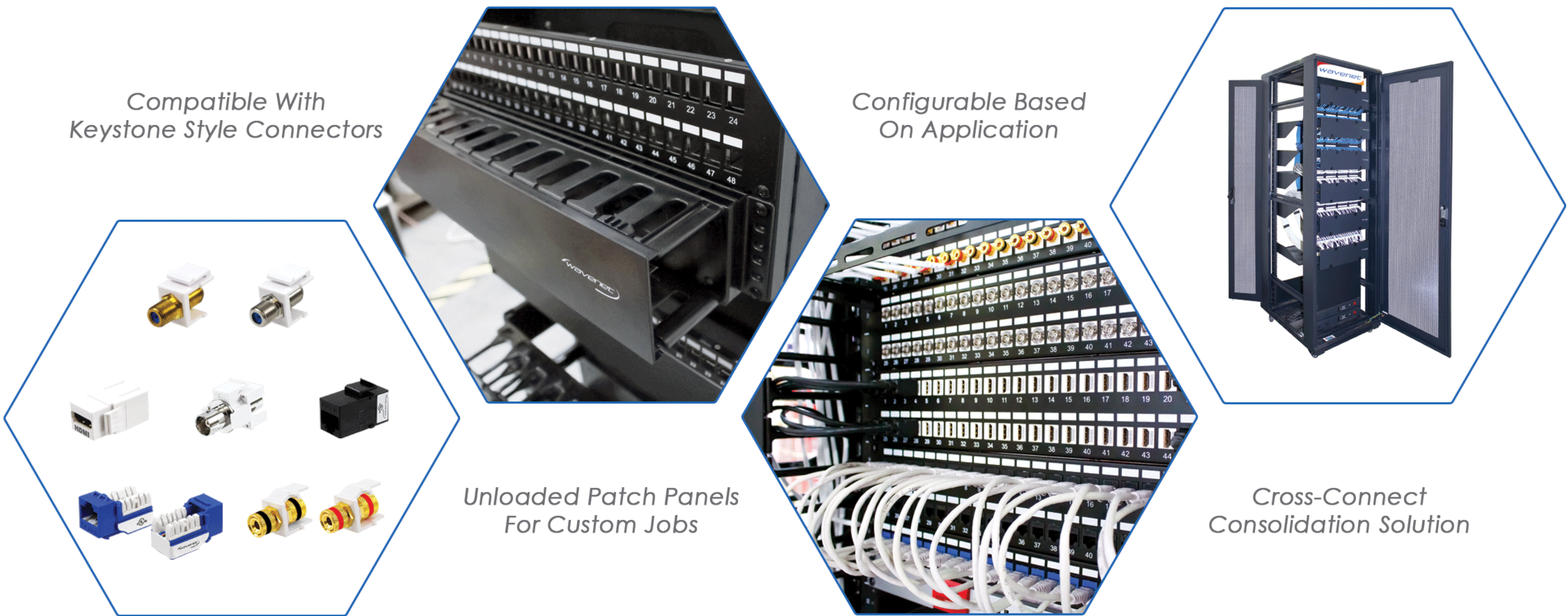
Unloaded Blank Patch Panels



BLANK PATCH PANELS



- 2U, 48-Port, with labeling areas. Compatible with keystone style connectors
- 1U, 24-Port, with labeling area. Compatible with keystone style connectors
- 12-Port, Wall mount. Compatible with keystone style connectors, Rotatable Modules



Unloaded Blank Patch Panels



ANGLED BLANK PATCH PANELS

Standard



ABP1U-24P 1U 24-Port

Integrated Support Bars
• Secures cables
at required bend radius

High-Density



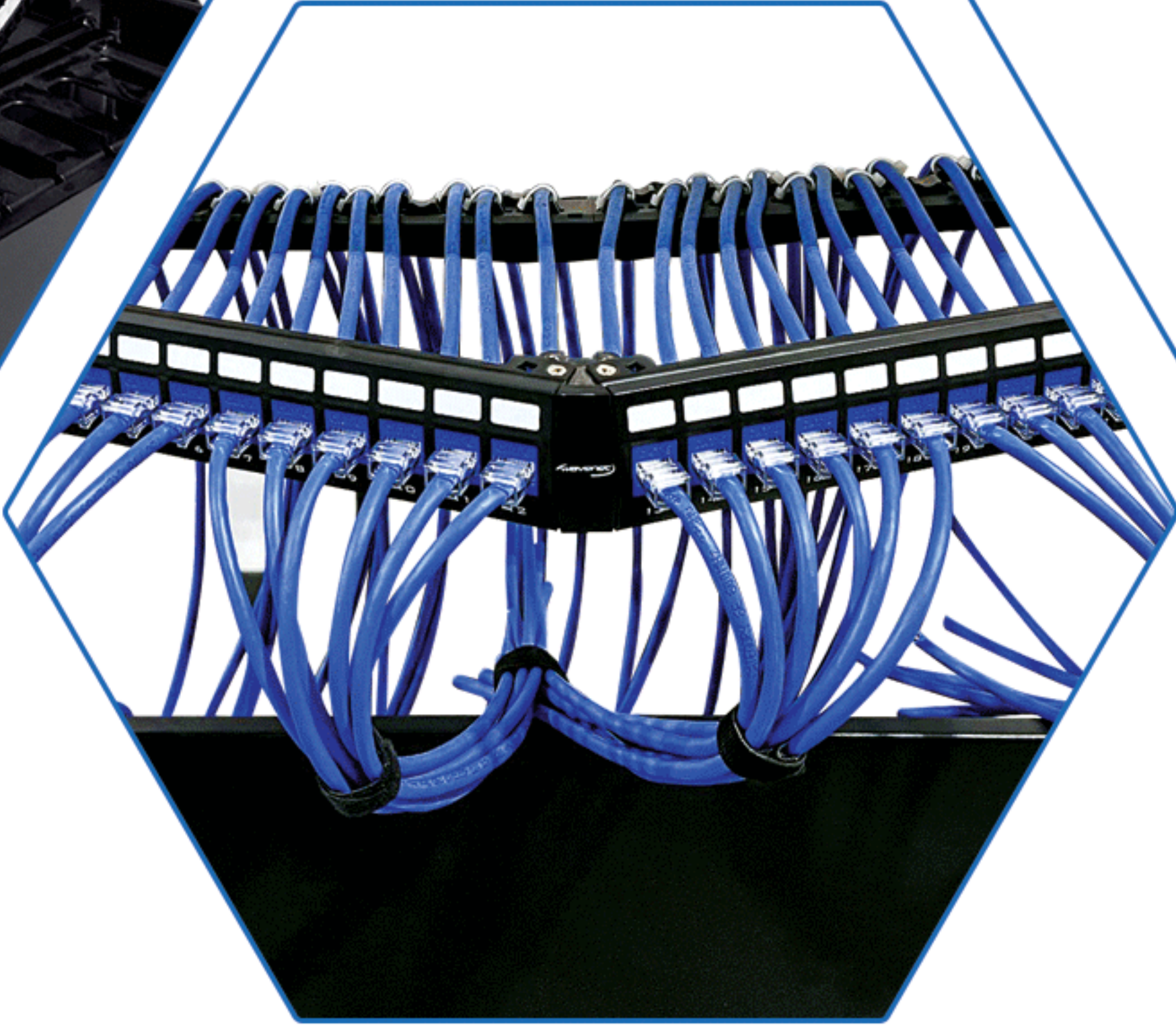
ABP1U-48U 1U 48-Port

- Angled design saves rack space by routing patch cords directly into vertical cable managers
- Accommodates [1U/24-port, 1U/48-port] keystone style snap-in modular connectors
- Include rear cable management bar for proper cable support

Compatible With
Keystone Style Connectors



Configurable Based
On Application



Unloaded Patch Panels
For Custom Jobs



Cross-Connect
Consolidation Solution



CAT6A Patch Panels



CAT6A Patch Panels Available:
6APP48 48-PORT
6APP24 24-PORT



• Vertical 110-Type IDC terminations help isolate potential Alien Crosstalk (AXT)

Integrated Support Bars
• Secures cables at required bend radius

• Hinged label holder for easy label changes

CAT6A 110-TYPE PATCH PANELS

- PoE Type 4 compliance for applications up to 100W
- Foldable cable management bar included with each panel
- Meet and exceeds ANSI/TIA-568.2-D
- UL Listed & TAA Compliant

Perm. Link Cable Test Summary

Headroom 8.9 dB (NEXT 36-45)
Limit: TIA CAT6A Perm. Link Cable
Type: CAT6A U/UTP
NVP: 68.2%



*See Wavenet for detailed results

Punch Down Tool
TOOLPD-11066

4-Pair Punch Down Tool
Makes Work 80% Faster

4-Pair Punch Down Tool
TOOL-PP-J4PR

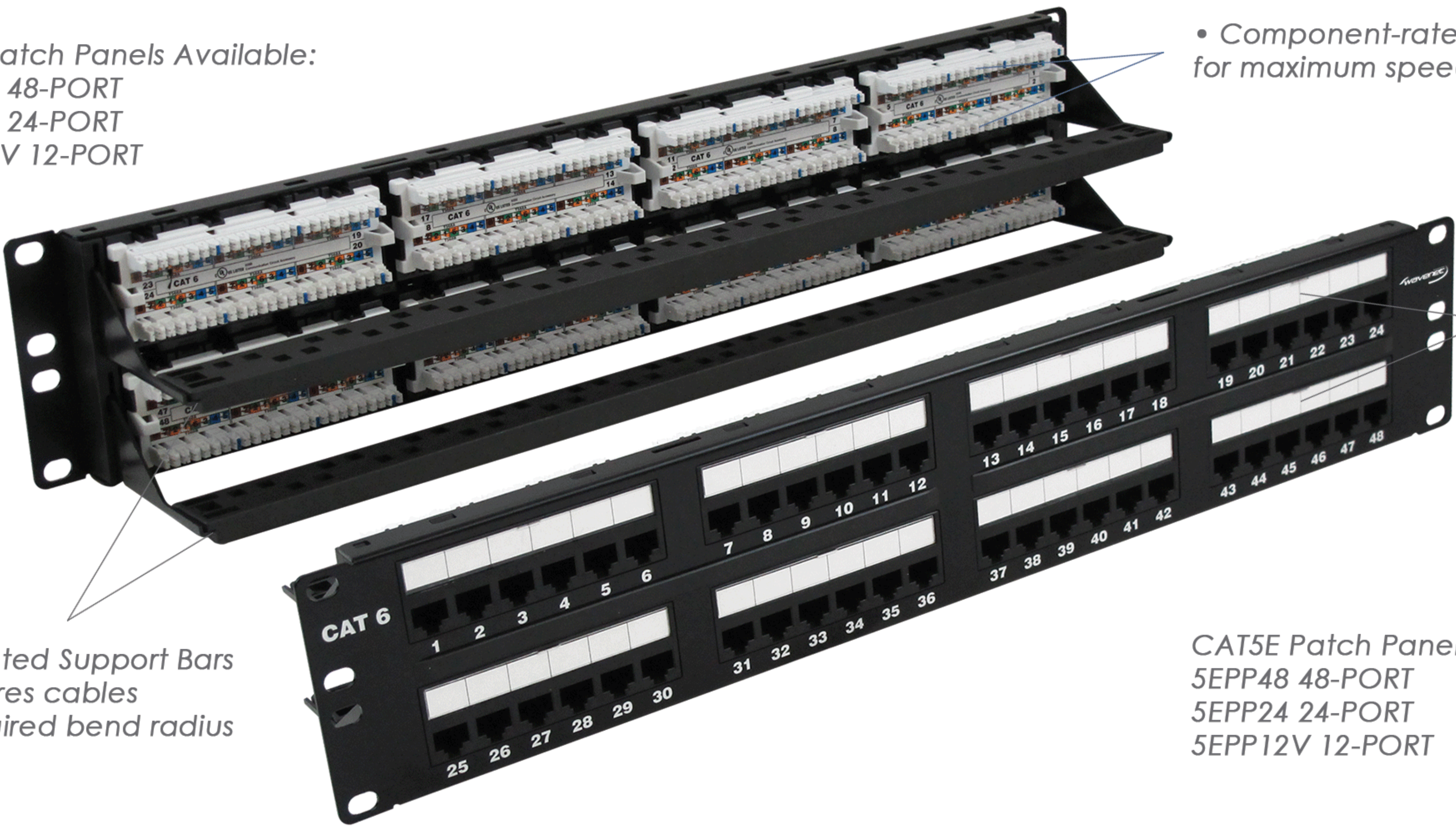
Time Is Money
Work Smarter Not Harder



CAT6 & CAT5E Patch Panels



CAT6 Patch Panels Available:
6EPP48 48-PORT
6EPP24 24-PORT
6EPP12V 12-PORT



• Component-rated performance for maximum speed and bandwidth

• Hinged label holder for easy label changes

Integrated Support Bars
• Secures cables at required bend radius

CAT5E Patch Panels Available:
5EPP48 48-PORT
5EPP24 24-PORT
5EPP12V 12-PORT

CAT6 & CAT5E 110-TYPE PATCH PANELS

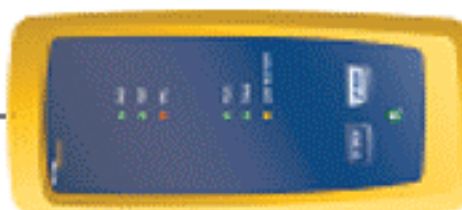
- 12-Port, T568A/B wiring, wall mountable w/ 89D bracket
- 1U/24-Port, 2U/48-Port, 110-TYPE, T568A/B wiring
- Meet and exceeds ANSI/TIA-568-C
- UL Listed & TAA Compliant

Perm. Link Cable Test Summary

Headroom 7.5 dB (NEXT 36-78)
Limit: TIA CAT6 Perm. Link Cable
Type: CAT6 U/UTP
NVP: 69.0%



293 ft



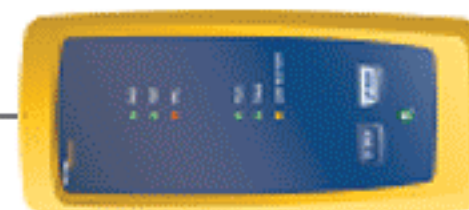
*See Wavenet for detailed results

Perm. Link Cable Test Summary

Headroom 8.6 dB (NEXT 36-78)
Limit: TIA CAT5E Perm. Link Cable
Type: CAT5E U/UTP
NVP: 69.0%



295 ft

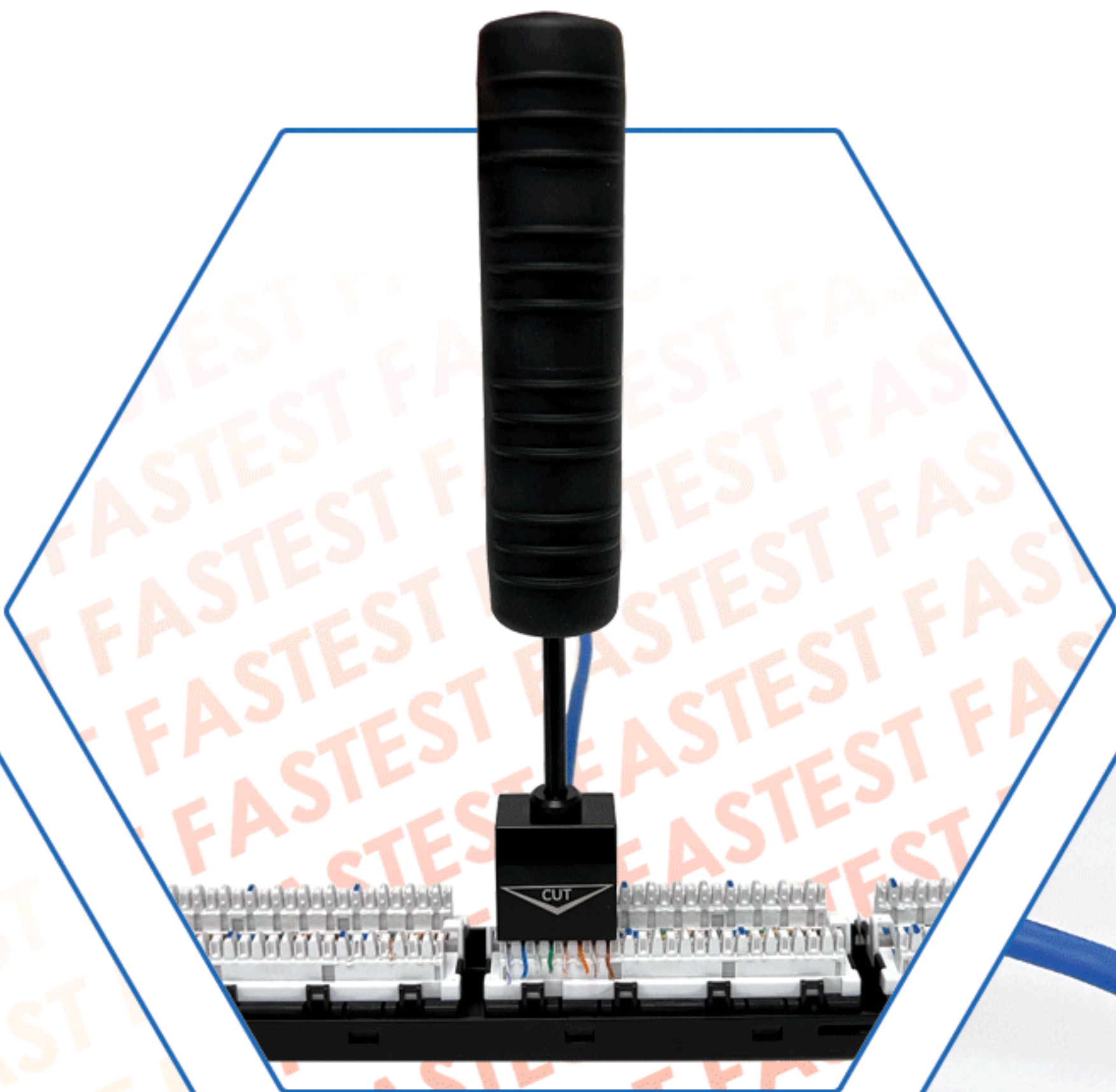


*See Wavenet for detailed results

Punch Down Tool
TOOLPD-11066



4-Pair Punch Down Tool
TOOL-PP-J4PR



4-Pair Punch Down Tool
Makes Work 80% Faster



Time Is Money
Work Smarter Not Harder

