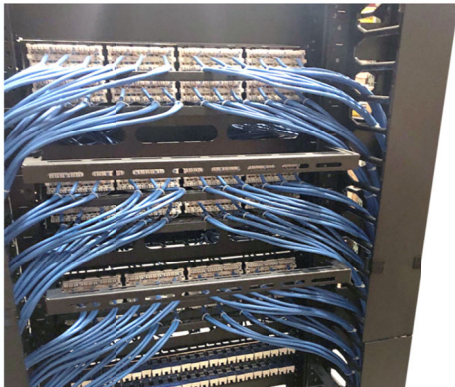


# 48-Port 2U Category 5e 110-Type Patch Panel

## Product Detail



## Application



## Overview

48-Port Category 5e 2U racks and cabinets mountable patch panel is ideal for small-to-medium sized installations. 48-port version offers cross-connect 110-type IDC block. The patch panel holds up to forty eight ports for centralized cabling connections, and is useful for where future moves, adds, and changes (MACs).

## Features

- 48-port, 2U racks and cabinet mountable
- 110-Type IDC accepts UTP wire gauge 22-24 AWG
- Universal T568A/B wiring
- Includes rear cable management bar
- Hinged windows style w/ white labels
- Meet and exceeds ANSI/TIA-568-C requirements
- UL listed

## Standards & Compliance

- UL Listed
- ANSI/TIA-568-C
- RoHS

## Package Includes

- 48-Port CAT5E, 2U Patch Panel, 1 PCS.
- Rear Cable Management Bar, 2 PCS.
- Mounting Screw, 8 PCS.
- 3" Nylon Cable Tie, 48 PCS.
- Installation Instructions

Part Number	U Size	Port	Category	Package
5EPP-48-S	2U	48-Port	CAT5e	Single Pack