



Cable ID: CAT5E HDJ SERIES U/UTP CABLING SYSTEM CL

Test Summary: PASS

Date / Time: 10/08/2021 01:51:05 PM

Operator: Sam Hen

Model: DSX-5000

Headroom 8.4 dB (NEXT 36-45)

Software Version: V6.6 Build 2

Main S/N: 3658026

Test Limit: TIA Cat 5e Channel

Limits Version: V7.6

Remote S/N: 3658040

Cable Type: Cat 5e U/UTP

Calibration Date:

Main Adapter: DSX-CHA004

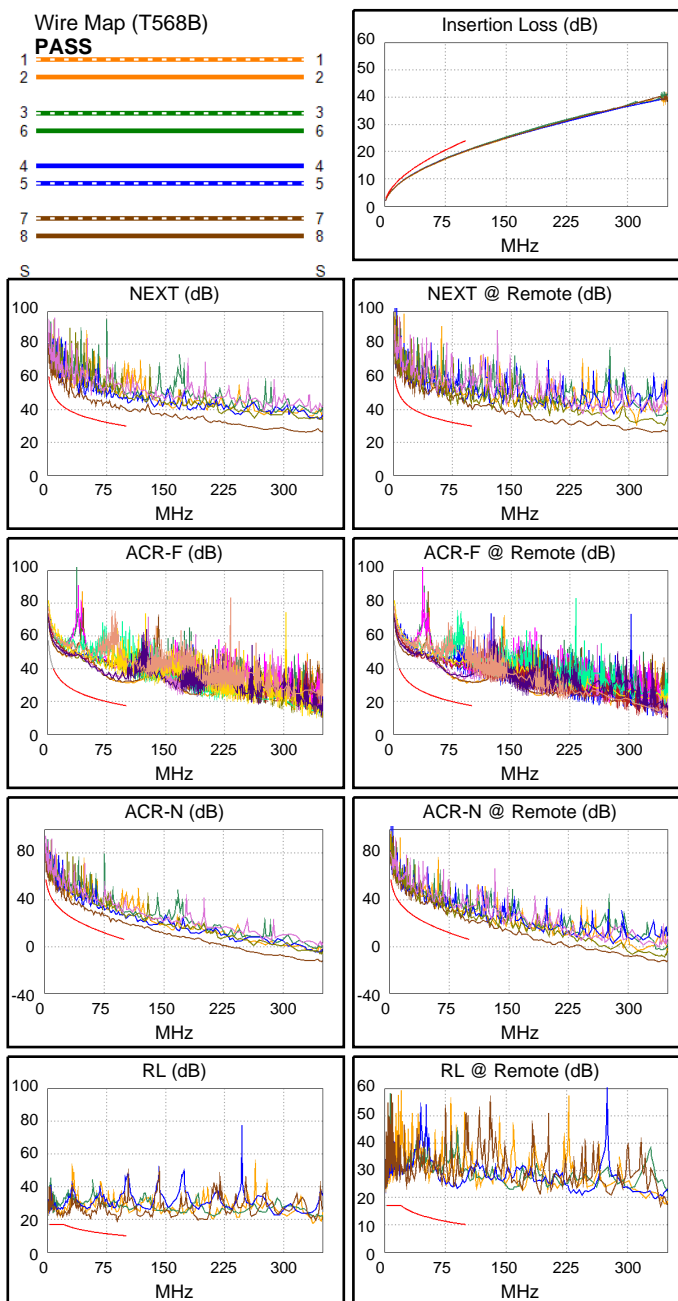
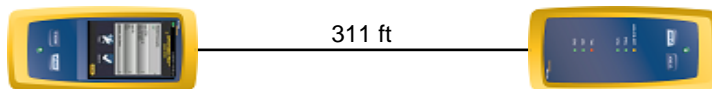
NVP: 69.0%

Main (Module): 09/30/2021

Remote Adapter: DSX-CHA004

Remote (Module): 09/30/2021

Length (ft), Limit 328	[Pair 78]	311
Prop. Delay (ns), Limit 555	[Pair 45]	476
Delay Skew (ns), Limit 50	[Pair 45]	17
Resistance (ohms)	[Pair 45]	17.76
Insertion Loss Margin (dB)	[Pair 36]	3.5
Frequency (MHz)	[Pair 36]	100.0
Limit (dB)	[Pair 36]	24.0



Worst Case Margin Worst Case Value

PASS	MAIN	SR	MAIN	SR
Worst Pair	36-45	36-45	36-45	36-45
NEXT (dB)	8.4	9.7	8.2	10.4
Freq. (MHz)	83.3	2.1	83.3	100.0
Limit (dB)	31.5	58.0	31.5	30.1
Worst Pair	36	36	36	36
PS NEXT (dB)	10.4	11.7	10.9	11.7
Freq. (MHz)	34.5	99.8	83.3	99.8
Limit (dB)	35.0	27.1	28.5	27.1

PASS	MAIN	SR	MAIN	SR
Worst Pair	12-36	12-36	12-36	12-36
ACR-F (dB)	13.6	13.2	13.7	13.5
Freq. (MHz)	90.0	93.3	99.3	100.0
Limit (dB)	18.3	18.0	17.5	17.4
Worst Pair	36	36	36	36
PS ACR-F (dB)	13.0	13.1	14.3	14.8
Freq. (MHz)	1.0	1.1	94.3	100.0
Limit (dB)	54.4	53.4	14.9	14.4

N/A	MAIN	SR	MAIN	SR
Worst Pair	36-45	36-45	36-45	36-45
ACR-N (dB)	10.2	10.1	13.8	14.2
Freq. (MHz)	26.8	2.1	99.8	100.0
Limit (dB)	28.0	54.8	6.1	6.1
Worst Pair	36	45	36	36
PS ACR-N (dB)	12.3	12.1	15.9	15.3
Freq. (MHz)	34.5	2.1	99.5	100.0
Limit (dB)	21.4	51.8	3.2	3.1

PASS	MAIN	SR	MAIN	SR
Worst Pair	78	12	78	45
RL (dB)	4.5	8.1	8.5	12.9
Freq. (MHz)	19.3	2.6	88.8	89.8
Limit (dB)	17.0	17.0	10.5	10.5

Compliant Network Standards:

10BASE-T	100BASE-TX	100BASE-T4
1000BASE-T	2.5GBASE-T	5GBASE-T
ATM-25	ATM-51	ATM-155
100VG-AnyLan	TR-4	TR-16 Active
TR-16 Passive		