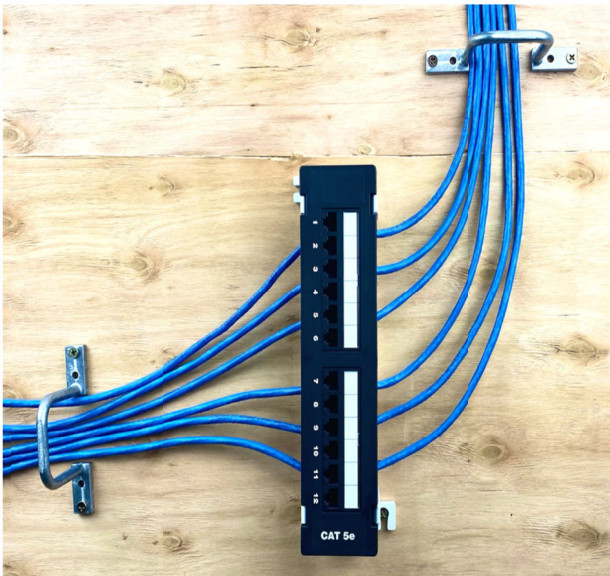


# 12-Port Wall Mount Category 5e 110-Type Patch Panel

## Product Detail



## Application



## Overview

12-Port Category 5e wall mount patch panel is ideal for wall-mount applications requiring a compact cross-connect 110-type IDC block. The patch panel holds up to twelve ports for centralized cabling connections, and is useful where low-cost, add-as-you-go flexibility for moves, adds, and changes (MACs).

## Features

- 12-port, wall mount, T568A/B wiring, Wall mountable w/ 89D bracket, T568A/B wiring
- 110-Type IDC accepts UTP wire gauge 22-24 AWG
- Hinged windows style w/ white labels
- Meet and exceeds ANSI/TIA-568-C requirements
- UL listed

## Standards & Compliance

- UL Listed
- ANSI/TIA-568-C
- RoHS

## Package Includes

- 12-Port CAT5e Wall Mount Patch Panel, 1 PC.
- 89D Bracket, 1 PC.
- Mounting Screw, 4 PCS.
- Installation Instructions

| Part Number | U Size     | Port    | Category | Package     |
|-------------|------------|---------|----------|-------------|
| 5EPP-12V-S  | Wall Mount | 12-Port | CAT5e    | Single Pack |