

RJ45-EZPASS®

PASS THROUGH RJ45 MODULAR PLUG

CAT6 & CAT5E



THE FASTEST & EASIEST
TERMINATION EVERY TIME!

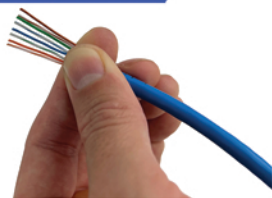


Features:

- For use with 24-26 AWG CAT6 & CAT5E Unshielded solid and stranded cables
- High-Performance 3Prongs Brass 8P8C and 50um gold-plated contacts
- Conductors trimmed to the correct length by the tool – no measuring
- RJ45-EZPASS® single piece design eliminates loading bar
- Compatible with Wavenet's RJ45-EZPASS® crimping tool
- CAT6 Max Outer Diameter: 6.5mm/ Insulation Diameter Range: 0.9-1.10mm
- CAT5E Max Outer Diameter: 5.5mm/ Insulation Diameter Range: 0.9-1.0mm
- Standard compliances: ANSI, FCC, TIA, UL, IEC, ISO, CE, REACH, RoHS

Part Number:	Item Description	Packaging
CAT5ERJ45-EZPASS	CAT5E UTP PASS-THROUGH STYLE MODULAR PLUG 100 PCS / JAR, RED COLOR CAP	100 PCS / JAR
CAT6RJ45-EZPASS	CAT6 UTP PASS-THROUGH STYLE MODULAR PLUG 100 PCS / JAR, BLUE COLOR CAP	100 PCS / JAR

Instructions:



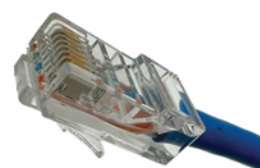
Step 1



Step 2



Step 3



Finished

Tool Options:



TOOL-EZPASS



T352

