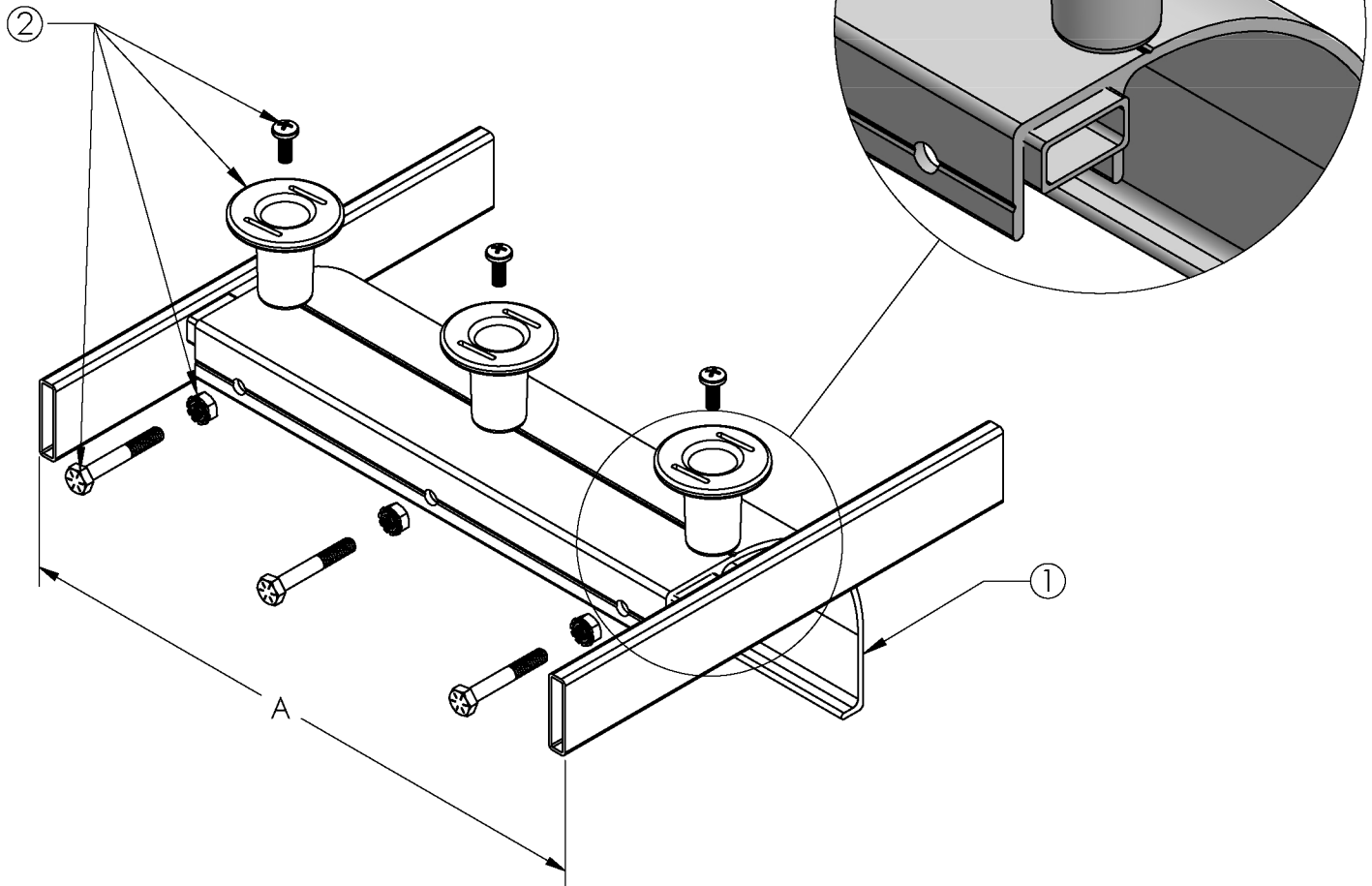


PRODUCT INFORMATION SHEET

CABLE RADIUS DROP

The radius drop allows for cables to exit relay rack and maintain proper bend radius.

1. Constructed of high-strength 6063-T6 alum extrusion
2. Includes hardware kit
3. Available in 12", 18" and 24" runway widths (6", 9", 15" and 36" special order)
4. Available in black



Part Number

WL-RASD-BK1
